

Giggle and Grow

FABRICS BY KATIE HENNAGIR



Quilt Design: **Katie Hennagir**

Quilt Size: **36½" x 48"**

andoverfabrics.com



About Giggle and Grow

As a mother of two I have wishes for my kids: to grow, love, sing, dream, and giggle. Giggle & Grow was inspired by combining those wishes for my children with images from nature. I envision this line growing with kids from nursery to play room. — *Katie Hennagir*

andover

makower uk
The Henley Studio

Free Pattern Download Available

1384 Broadway New York, NY 10018
Tel. (800) 223-5678 • andoverfabrics.com

Giggle and Grow Quilt



Introducing Andover Fabrics new collection: **Giggle and Grow** by Katie Hennagir

Quilt designed by Katie Hennagir

Fabric Requirements

		Yardage	Fabric
Fabric A	quilt center	1 panel (2/3 yard)	7194-B
Fabric B	pieced border	fat 1/8 yard	7195-B
Fabric C	pieced border	fat 1/8 yard	7195-BL
Fabric D	pieced border	fat 1/8 yard	7196-B
Fabric E	pieced border	fat 1/8 yard	7196-BO
Fabric F	pieced border	fat 1/4 yard	7197-BY
*Fabric G	pieced border	3/4 yard	7198-BG
Fabric H	pieced border	fat 1/8 yard	7198-BR
Fabric I	border	3/8 yard	7199-BN
Backing		1 1/2 yards	7196-BL

*includes binding

Quilt finishes 36 1/2" x 48"

Birds, bugs, and balls are just some of the novelty images in this fabric line that's all about what kids love and what moms love about watching their kids grow. The bright, cheery colors will brighten any room, and the size is just right for cuddling under. The center panel has words to live by — "dream, sing, love, grow."

Cutting Directions

Note: Read assembly directions before cutting patches. All measurements are cut sizes and include 1/4" seam allowances. A fat 1/8 is a 9" x 20"-22" cut of fabric. A fat 1/4 is an 18" x 20"-22" cut. Borders are cut the exact lengths required plus 1/4" seam allowances. WOF designates the width of fabric from selvedge to selvedge (approximately 42" wide).

Fabric A Fussy-cut (1) panel 23" x 42 1/2", cut crosswise

Fabric B Cut (2) rectangles 5 1/2" x 7 1/2"

Fabric C Cut (2) rectangles 5 1/2" x 7 1/2"

Fabric D Fussy-cut (4) rectangles 2 1/4" x 5 1/2", centering words

Fabric E Fussy-cut (4) rectangles 2 1/4" x 5 1/2", centering words

Fabric F Fussy-cut (2) rectangles 5 1/2" x 7 1/2", centering trees

Fabric G *Cut (5) strips 2 1/2" x WOF for binding (read Step 5 before cutting)
Cut (2) rectangles 5 1/2" x 7 1/2"

Fabric H Cut (2) rectangles 5 1/2" x 7 1/2"

Fabric I Cut (2) side borders 2 1/2" x 42 1/2", cut crosswise
Cut (2) top/bottom borders 3 1/2" x 37", cut crosswise
Note: Borders are cut different widths.

Backing Cut (1) panel 54" x WOF

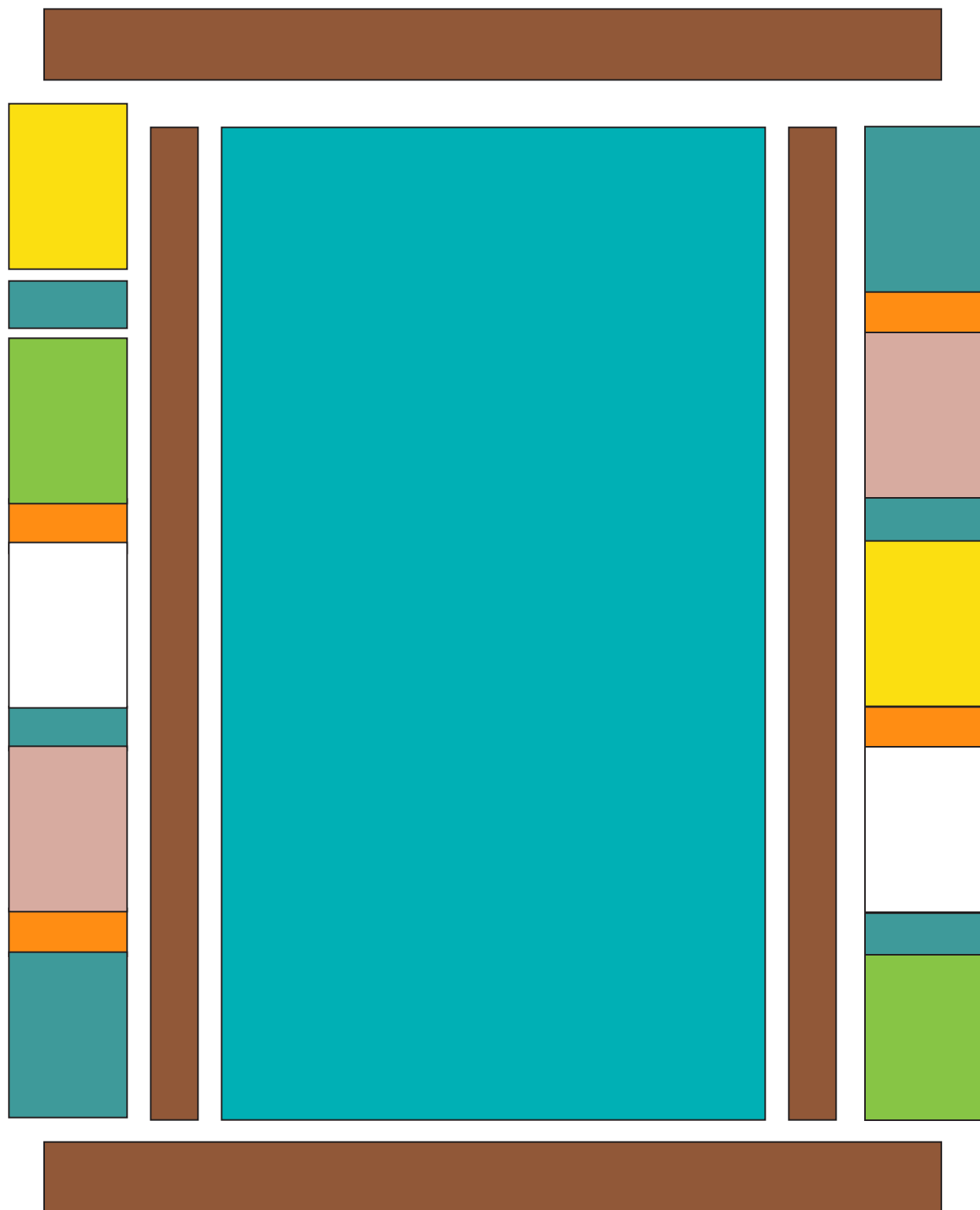
Making the Quilt

1. Referring to the Quilt Diagram, sew the Fabric I 2 1/2"-wide borders to the sides of the quilt.
2. Join the rectangles into 2 vertical rows, following the placement in the diagram. Be careful to keep the prints in the correct orientation so any directional motifs will be upright when sewn to the quilt. Sew rows to sides of the quilt.
3. Sew the Fabric I 3 1/2"-wide borders to the top and bottom.

Finishing the Quilt

4. Layer the quilt with batting and backing and baste. Quilt in the ditch around border patches. Quilt around the printed motifs in the center panel and the pieced border.
5. Fabric G yardage is sufficient to make bias binding if you prefer. Cut the 2 rectangles first, and from the leftover fabric, cut 2 1/2"-wide bias strips as long as fabric allows. Join together end to end, and bind in the usual manner.

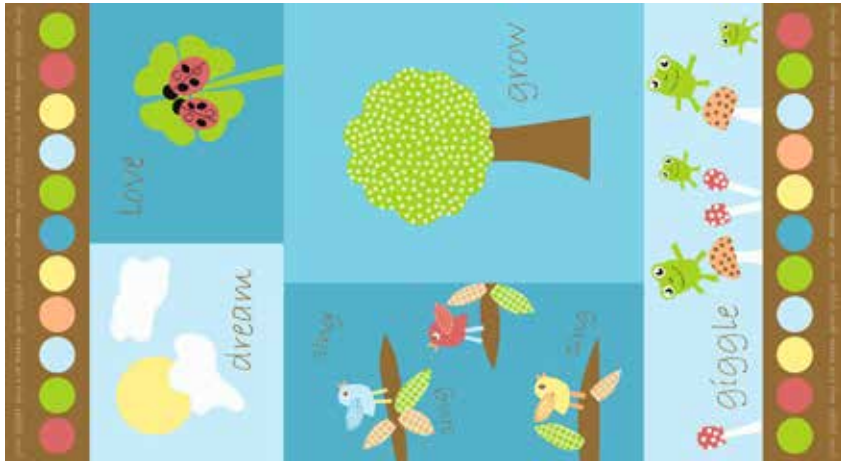
Giggle and Grow Quilt



Quilt Diagram

Giggle and Grow

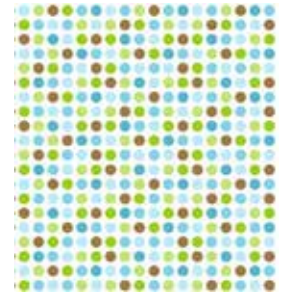
FABRICS BY KATIE HENNAGIR



7194-B



7196-B



7199-B



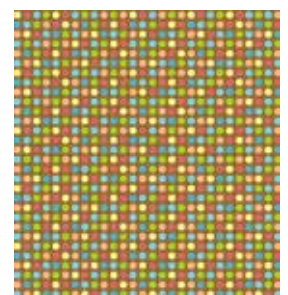
7195-B



7195-BL



7196-BL



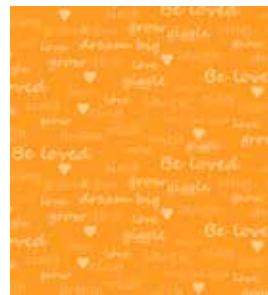
7199-BN



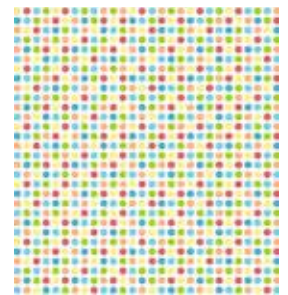
7197-B



7197-BY



7196-BO



7199-BX



7198-BG



7198-BR

All fabrics are used in quilt pattern. Fabrics shown are 10% of actual size.

andover

makower uk
The Henley Studio

Free Pattern Download Available

1384 Broadway New York, NY 10018
Tel. (800) 223-5678 • andoverfabrics.com